

01 PORTHCRAWL WATERSIDE OPEN SPACES PUBLIC CONSULTATION WELCOME



The Porthcawl Placemaking Strategy provides a framework for the development of Porthcawl Waterside over the short, medium and long term.

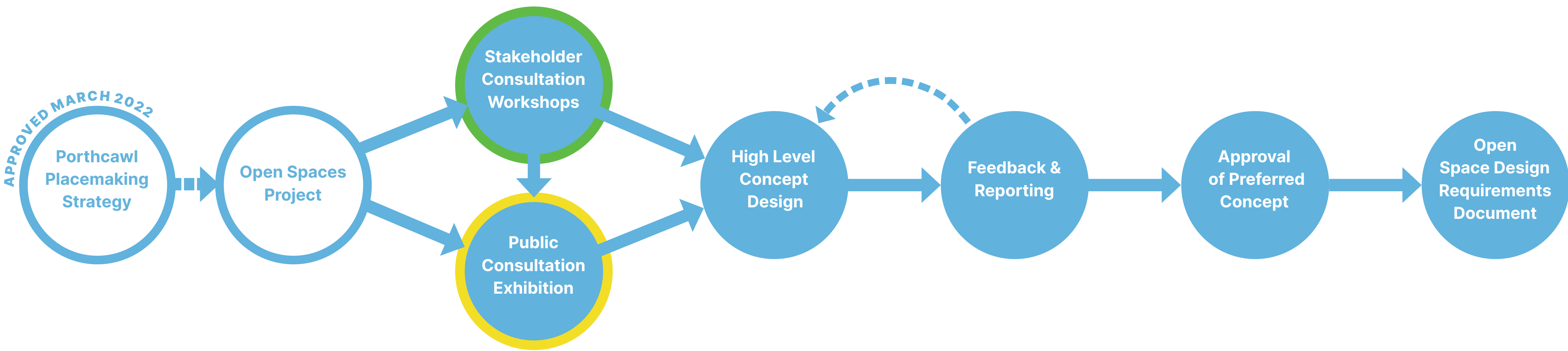
Placemaking draws upon an area's potential to create high quality development and public spaces that promote people's prosperity, health, happiness, and wellbeing in the widest sense. Placemaking adds social, economic, environmental and cultural value to development proposals resulting in benefits that go beyond a physical development boundary.

Following the approval of the Placemaking Strategy we are consulting widely again to gather ideas, views and opinions relating specifically to the future Open Spaces which are planned. These open spaces, which are significant in scale, are fundamental to the strategic plan, providing amenity space, public realm and setting the quality and character of any future development.

Through key stakeholder and public consultation, it is the intention to establish how these future public open spaces should best be used and designed, capturing what is essential to their future success. Your views are important and welcomed.



THE PATH TOWARDS DEFINING THE OPEN SPACE DESIGN REQUIREMENTS



THE WIDER CONTEXT



PLACEMAKING STRATEGY AREA



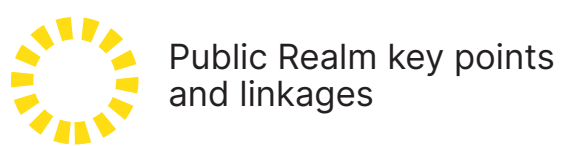
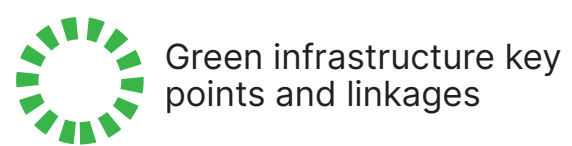
WELL-BEING OF FUTURE GENERATIONS ACT



02 PORTHCAWL WATERSIDE OPEN SPACES PUBLIC CONSULTATION PLACEMAKING STRATEGY CONTEXT

OPEN SPACE PRINCIPAL STRATEGIES (EXTRACTED FROM PLACEMAKING STRATEGY):

- 1 Create a significant area of high quality, flexible public realm along Salt Lake and Eastern Promenade to accommodate a wide range of outdoor leisure activities, partly permanent, partly temporary in nature. Activities may include markets, fayres, exhibitions and festivals, pop up retail, performances, outdoor cinema, mini golf, fairground stalls and rides.
- 2 Link the existing marina and Cosy Corner into the new development through high quality public realm, providing spaces to meet, sit and enjoy the location and activities, supported by cafes, leisure and community facilities in the new development.
- 3 Provide some elevated areas of publically accessible space to maximise enjoyment of views out toward the sea.
- 4 Transition from the dense, hard landscaped, urban town centre to the vast open spaces of the beach and Relic Dunes
- 5 Enhance Griffin Park and create a green link through the former Monster Park to the Relic Dunes.
- 6 Create a variety of green spaces from formal park to wild wood to accommodate a range of activities which may include equipped play, outdoor gym, exercise trails, cycling trails or tracks, bowls, tennis, temporary supervised sports such as archery.
- 7 Punctuate new development with green spaces and trees.
- 8 Enable occupants to enjoy some private amenity and security whilst keeping the development open and permeable
- 9 Ensure all public realm is of the highest quality and accessible.



CONNECTIVITY PRINCIPAL STRATEGIES (EXTRACTED FROM PLACEMAKING STRATEGY):

- 1 Provide a multi storey car park on Hillsboro to cater for both tourist and resident needs.
- 2 Remove vehicles from Eastern Promenade with the exception of restricted servicing.
- 3 Create a high quality facility for arrival by bus, linked to cycle hire and community facilities.
- 4 Incorporate EV charging opportunities throughout all areas of the development.
- 5 Reduce the number of car spaces provided within the development areas below current standards to promote more active and greener travel.
- 6 Enhance Active Travel routes and prioritise the pedestrian and cyclist throughout the whole development.
- 7 Create stronger pedestrian and cycle linkages between the town centre and the coast, particularly through the extension of Dock Street as an Active Travel route.
- 8 Ensure the whole development is permeable to pedestrians and cyclists and easy to navigate.
- 9 Open up the Sandy Bay development areas through a new access road for both vehicles and Active Travel and prevent vehicular access to the new development areas from Mackworth Road, Sandy Lane and Rhych Avenue.
- 10 Divert vehicular access to High Tide off Mackworth Road and Sandy Lane onto the new access road.



- Access stopped off to vehicles
- Primary active travel route
- Primary vehicular route
- Pedestrian route
- Reduced vehicular access
- Indicative secondary road network



03 PORTHCAWL WATERSIDE OPEN SPACES PUBLIC CONSULTATION SALT LAKE, DOCK STREET AND LOWER HILLSBORO

SALT LAKE

This diagram shows a significant area of land which will provide future open space and public realm.

Whilst some limited vehicular access will be required for servicing and marine operations this space is fundamentally for pedestrian and cyclists.

A new linear park is proposed for the current Eastern Promenade area. The linear park covers an area of 1.36 Ha which equates to 2 full size football pitches.

The Dock Street extension will link the linear park with the town centre and will prioritise pedestrian and cyclist movement.

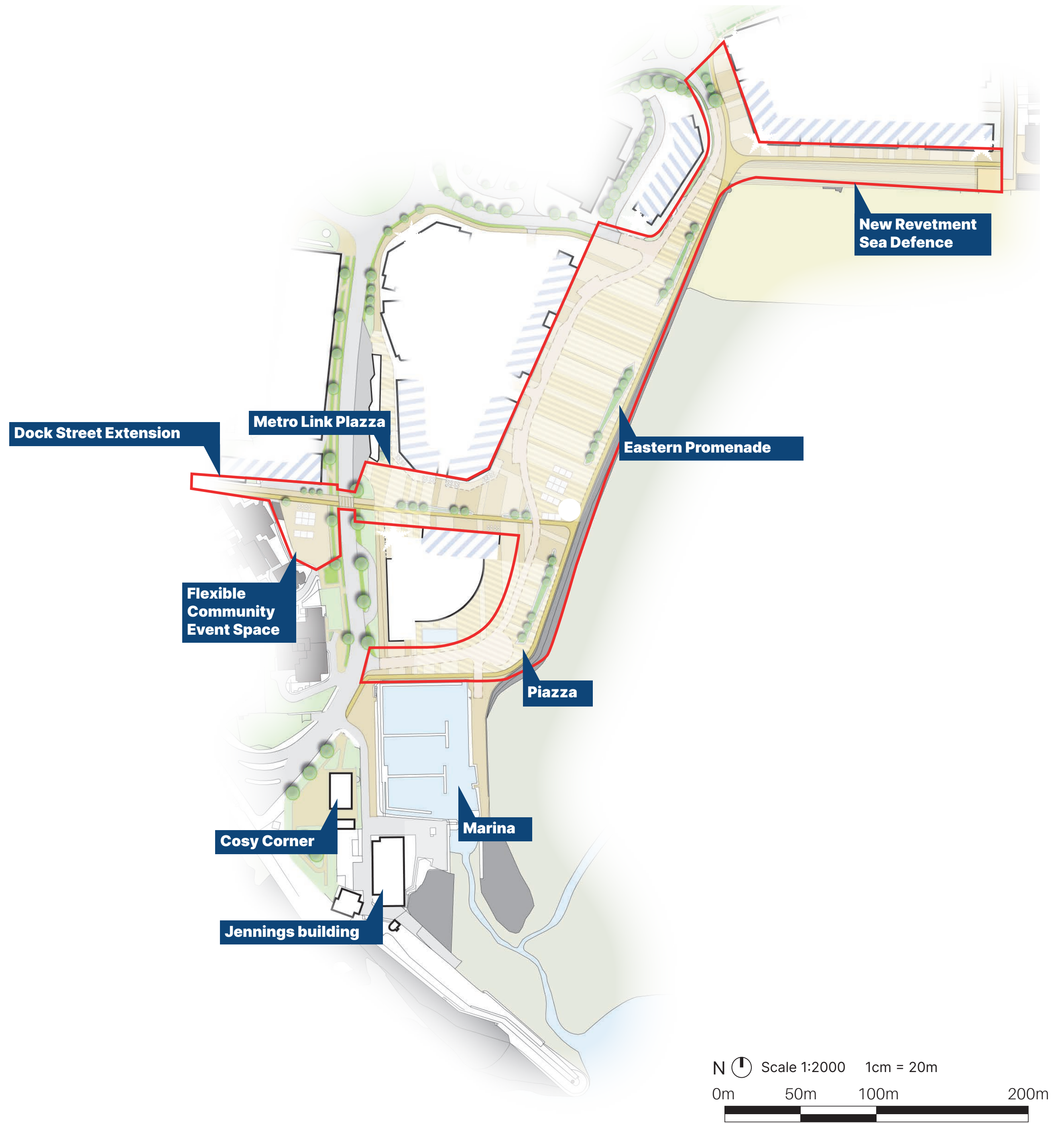
In total there is 2.40 Ha of open space across Salt Lake and Lower Hillsboro which equates to 3.4 full size football pitches.

The images below show some other spaces that you may know and how they relate to the size of the new linear park on Salt Lake.

How do you think these spaces should be used?

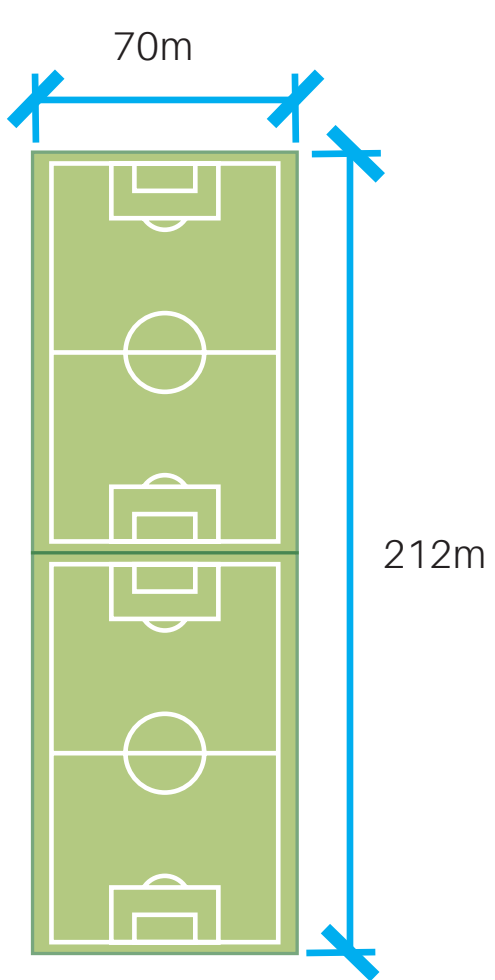
What sort of activities would you like to see?

How should the open spaces look and feel?

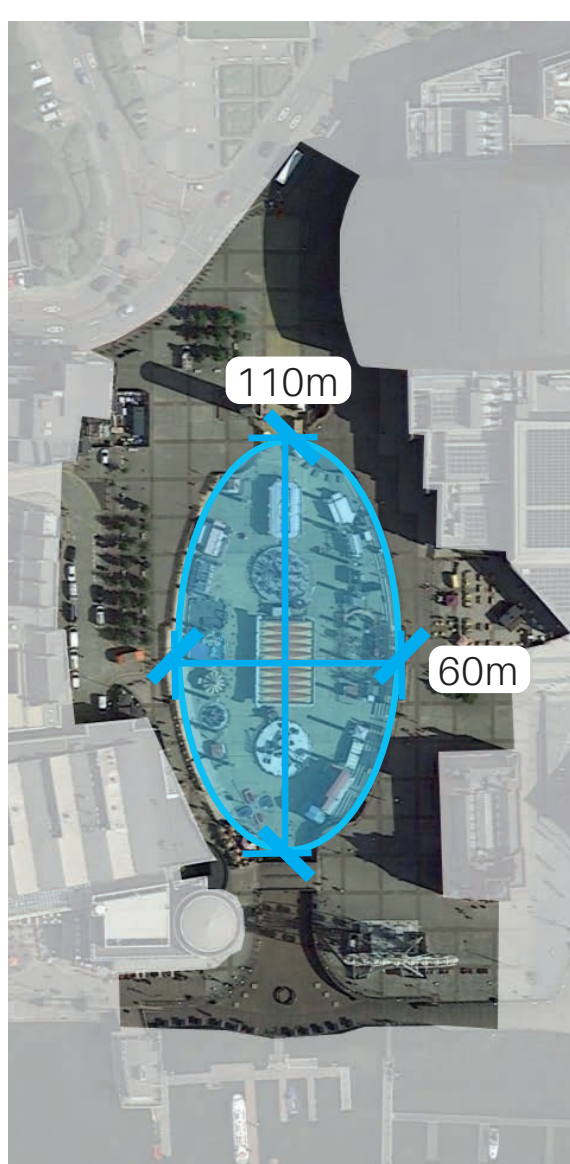


AERIAL IMAGES FOR SPACE COMPARISON

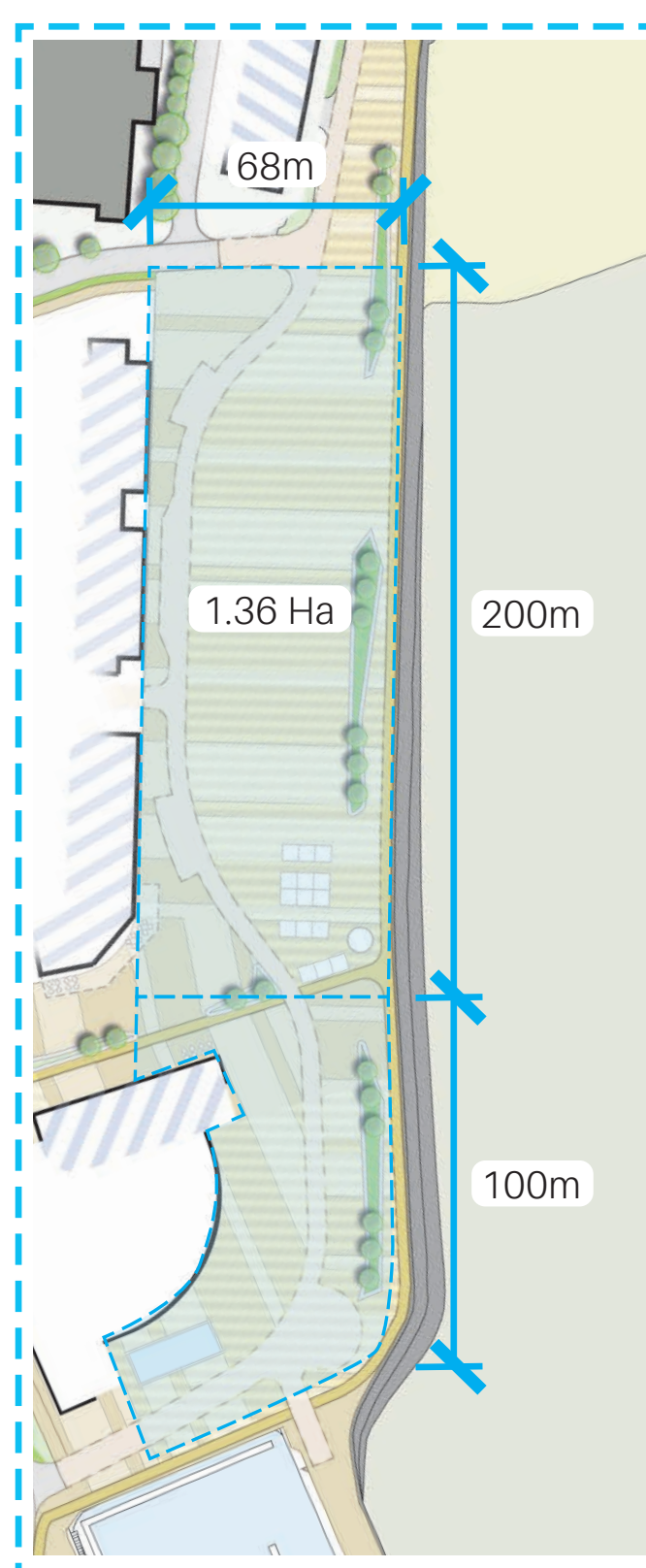
2 X FOOTBALL PITCHES



OVAL BASIN, CARDIFF BAY



PROPOSED OPEN SPACE



BARRY ISLAND



ABERAVON BEACH



04 PORTHCRAWL WATERSIDE OPEN SPACES PUBLIC CONSULTATION GREEN CORRIDOR

GRIFFIN & MONSTER PARKS, RELIC DUNES & RHYCH POINT

This diagram shows how Griffin Park can be linked through Coney Beach to Mackworth Road, through the Monster Park and on to the Relic Dunes. This will create a green corridor all the way from New Road to Rhych Point. The green corridor will more than double the size of Griffin Park.

Whilst this corridor must accommodate a new vehicular access into the former caravan park, the space is prioritised for pedestrians and cyclists.

There is a total of 5.26 Ha of open space within the red line boundary. This equates to 7.4 full size football pitches.

How do you think these spaces should be used?

What sort of activities would you like to see?

How should the open spaces look and feel?

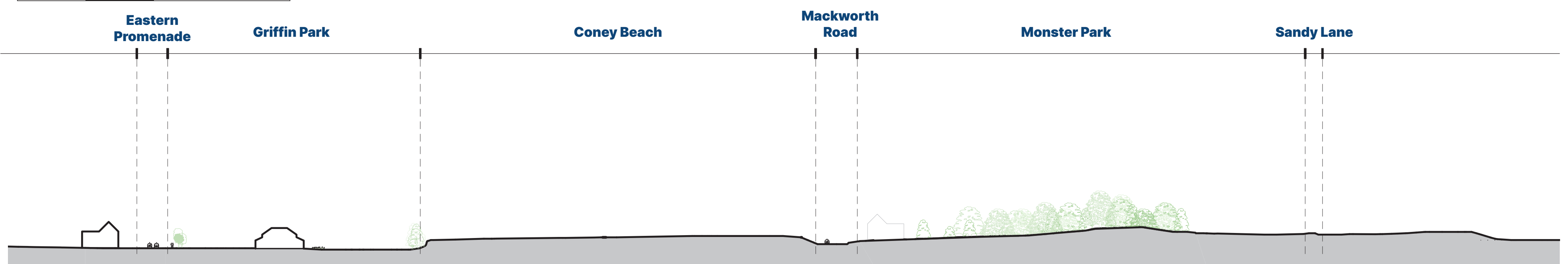


MONSTER PARK PANORAMA



GRIFFIN PARK TO MONSTER PARK SITE SECTION

Scale 1:1000 1cm = 10m
0m 25m 50m 100m



05 PORTHCAWL WATERSIDE OPEN SPACES PUBLIC CONSULTATION STAKEHOLDER ENGAGEMENT WORKSHOPS



Two days of ideas workshops have been held with a number of stakeholders representing groups and interests within Porthcawl, with the intention of gathering a wide range of initial ideas and thoughts to promote discussion and help canvas opinion through this open space consultation.

The Ideas themes and priorities that begun to emerge from those stakeholder workshops are set out below and we would welcome your thoughts about these along side adding your own ideas. We are here to listen to your views and feedback/ideas forms are also available.



EMERGING IDEAS AND PRIORITIES

SCORE	IDEA / PRIORITY
*****	Sustainable development
*****	Coexist with nature
**	Trees and hedges, not fences
**	Keep as much existing green space as possible
***	Less cars
**	Accessibility
*****	Design for young people and the future
**	Involve schools and colleges, skills for the future
****	Facilities for all ages and families
*****	Safe and fun environment
**	Free to use activities
****	Consultation with residents, community involvement and ownership
**	High Quality
*	Wow factor
*	Unique to Porthcawl
**	Attract visitors
**	Not an amusement park
***	Simplicity of design
**	Quiet places and busy places
*	Low maintenance
**	Park and ride scheme
*****	Pump park/all-wheel activity park
*****	Recreation, leisure and sports – badminton, tennis, basketball, bowls, table tennis
****	Use of water, splash pool, fountains, water jets
***	Adventure park, tree top adventure
**	Swimming
****	Skate Park
****	Play
****	Culture, art, music, food
*	Amphitheatre/outdoor performance space
*	Public toilets and changing
*	Market stalls, pop up shops
**	Bike hire, e bikes, fat bikes, wheelchairs
*	Crazy golf
*	Picnic, benches
*	Wellness/sensory garden
*	Dog fun/agility area

Top 5 Recurring Ideas And Priorities:

1. Sustainable development
2. Pump park/all-wheel activity park
3. Recreation, leisure and sports uses
4. Design for young people and the future
5. Safe and fun environment

* Denotes relative number of Stakeholders whom identified this matter as a key issue / priority

06 PORTHCAWL WATERSIDE OPEN SPACES PUBLIC CONSULTATION FOCUS AREAS - SALT LAKE, LOWER HILSBORO & DOCK STREET

SALT LAKE



What do you believe are the best uses for Salt Lake?

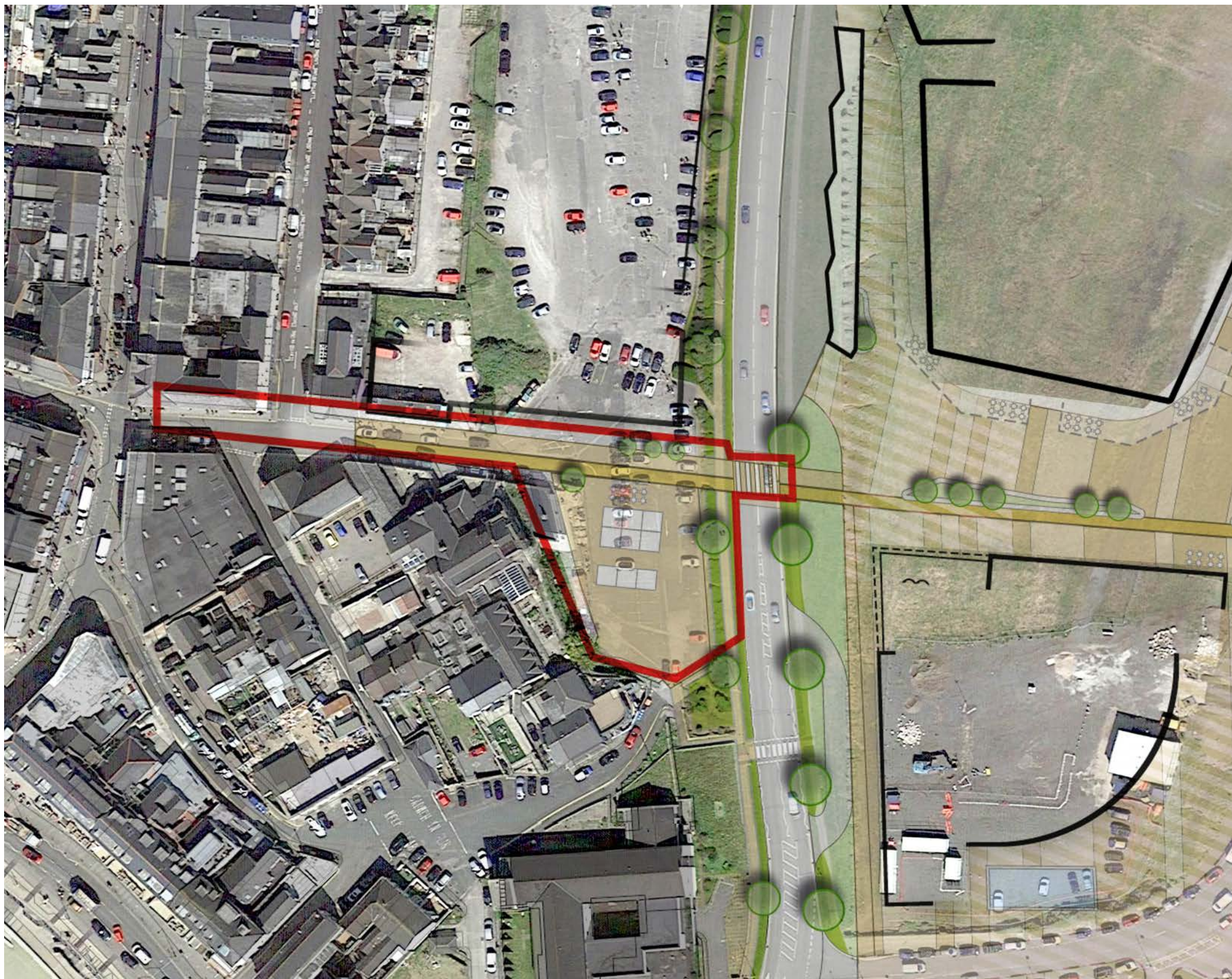
How would you like Salt Lake to look and feel?

These are some of the ideas raised by others:

- Flexible space, mix of paving and green landscape / trees
- Pump track, skate park
- Cafes
- Amphitheatre, outdoor performance
- Play
- Use of water, splash pool, fountains
- Public toilets / changing
- Art, food and music
- Market stalls, pop up shops
- Bike hire
- Wow factor
- Outdoor museum
- Interactive artwork
- Cycle path



LOWER HILSBORO & DOCK STREET

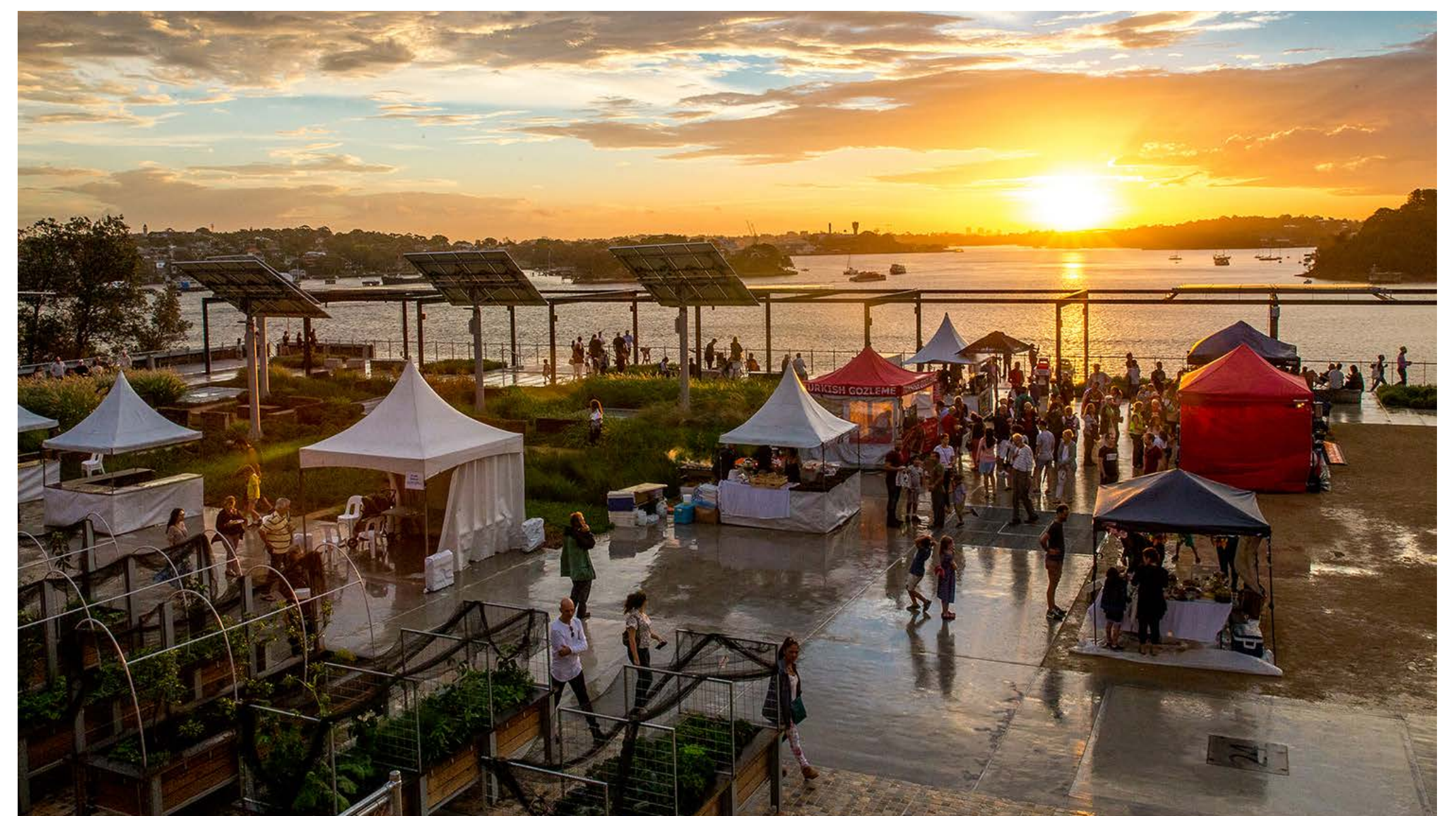


What do you believe are the best uses for Lower Hilsboro & Dock Street?

How would you like Lower Hilsboro & Dock Street to look and feel?

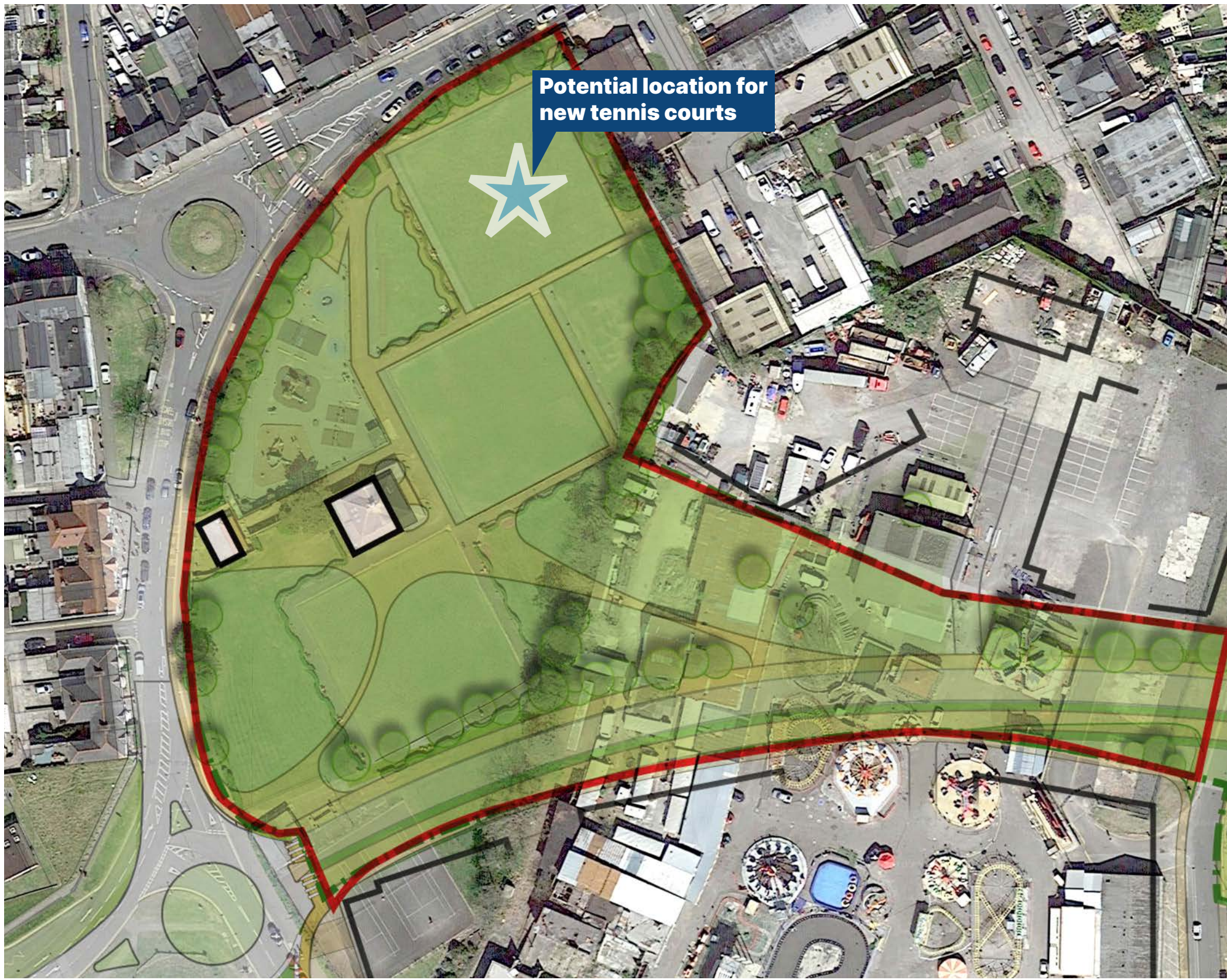
These are some of the ideas raised by others:

- Amphitheatre, outdoor performance
- Art, food and music
- Market stalls, pop up shops
- Bike hire
- Cafe
- Artwork
- Cycle path
- Pocket park
- Box park (shipping container retail development similar to the Barry Goodsheds)



07 PORTHCAWL WATERSIDE OPEN SPACES PUBLIC CONSULTATION FOCUS AREAS - GRIFFIN PARK & MONSTER PARK

GRIFFIN PARK



What do you believe are the best uses for Griffin Park & Coney Beach?

How would you like Griffin Park & Coney Beach to look and feel?

These are some of the ideas raised by others:

- Play
- Recreational Sports
- Bowls, Tennis, Badminton, Basketball
- Multi-Use Games Area
- Public toilets and Changing
- Wellness/Sensory Garden
- Bike hire
- Quiet areas
- Nature trail
- Artwork
- Cafe
- Chilling space for young people
- Cycle path
- Yoga
- Beach hire



MONSTER PARK

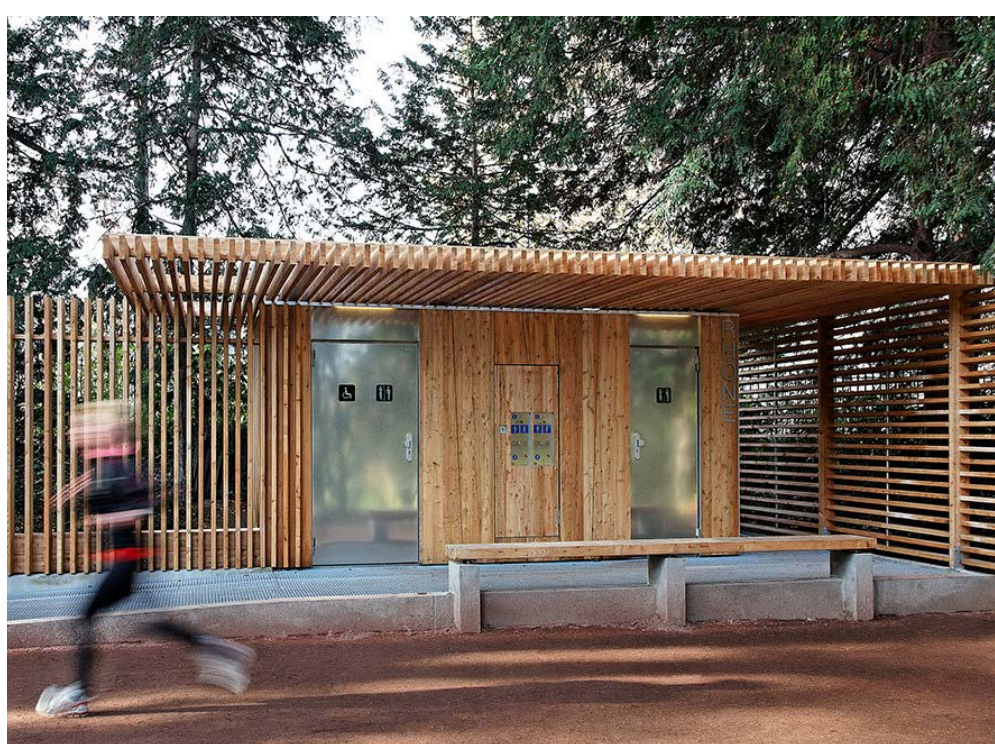


What do you believe are the best uses for Monster park?

How would you like Monster Park to look and feel?

These are some of the ideas raised by others:

- Pump track, skate park
- Bike trail
- Natural amenity space
- Play
- Public toilets / changing
- Adventure park / Tree top fun
- Camping Crazy golf
- Picnic
- Bike hire
- Dog fun/agility
- Nature trail
- Cycle path



08 PORTHCAWL WATERSIDE OPEN SPACES PUBLIC CONSULTATION FOCUS AREAS - RELIC DUNES & RHYCH POINT

RELIC DUNES



The Relic Dunes form part of the overall area of new and retained open space but principally are to be left untouched given their ecological and coastal defence function.

What do you believe are the best uses for the Relic Dunes?

How would you like the Relic Dunes to look and feel?

These are some of the ideas raised by others:

- Maintain the dune as natural habitat and flood defence
- Reshape the area of open space between the relic dunes and the open space linking monster park to provide a more graded transition
- Incorporate walkways / access through the dunes that do not impact on their ecological and coastal defence function.



RHYCH POINT



What do you believe are the best uses for Rych Point?

How would you like Rych Point to look and feel?

These are some of the ideas raised by others:

- Pump track, Skate Park
- Amphitheatre, outdoor performance
- Natural amenity space
- Play
- Picnic
- Dog fun / Agility
- Quiet Space
- Nature trail
- Artwork
- Cafe
- Rockpool

